

General Information

Chassis and Paint Codes - 2000 Model

Vehicle Identification Number

JHM AP1 1 4 * Y T 000001

a b c d e f g h

a. Manufacturer, Make and Type of Vehicle
JHM: HONDA MOTOR CO., LTD
HONDA Passenger vehicle

b. Line, Body and Engine Type
AP1: S2000/F20C1

c. Body Type and Transmission Type
1: 2-door Convertible/6-speed Manual

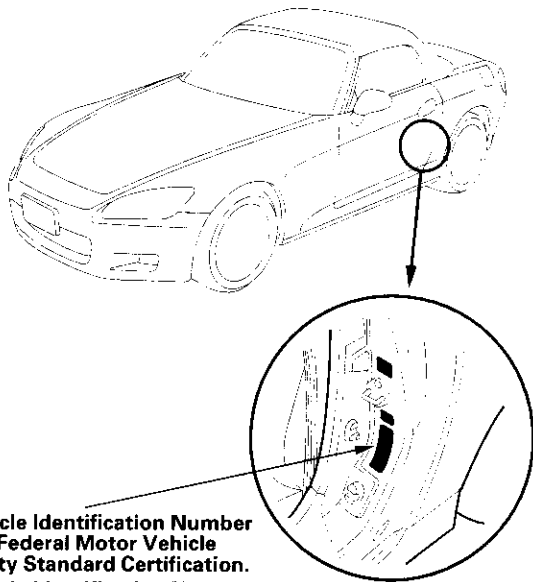
d. Vehicle Grade (Series)
4: Base Model

e. Check Digit

f. Model Year
Y: 2000

g. Factory Code
T: Tochigi Factory in Japan

h. Serial Number
For U.S. model: 000001—
For Canada model: 800001—



Vehicle Identification Number and Federal Motor Vehicle Safety Standard Certification.
Vehicle Identification Number and Canadian Motor Vehicle Safety Standard Certification.

Engine Number

F20C1 - 1000001

a b

a. Engine Type
F20C1: 2.0 l DOHC VTEC Sequential Multiport Fuel-injected engine

b. Serial Number
U.S. model: 1000001—
Canada model: 1100001—

Transmission Number

SCYM - 1000001

a b

a. Transmission Type
SCYM: 6-speed Manual

b. Serial Number

Paint Code

Code	Color
NH-547	Berlina Black
NH-565	Grand Prix White
NH-630M	Silverstone Metallic
R-510	New Formula Red

